

General Information Tools

Chapter 2.6

Instructions for Requesting Cohort Default Rates from the National Student Loan Data System (NSLDS)	<i>2.6-1</i>
General Information About the Electronic Loan Record Detail Report	<i>2.6-1</i>
Instructions for Requesting an Electronic Loan Record Detail Report	<i>2.6-2</i>
Electronic Loan Record Detail Extract File Layout and Detailed Repayment Information Extract File Layout	<i>2.6-4</i>
Alphabetical Data Manager Contacts	<i>2.6-10</i>
Numerical Data Manager Contacts	<i>2.6-11</i>

General Information Tools

Instructions for Requesting Cohort Default Rates from the National Student Loan Data System (NSLDS)

Default Management will send out instructions for requesting cohort default rates from NSLDS at a later time.

General Information About the Electronic Loan Record Detail Report

An electronic loan record detail report is an electronic version of the hardcopy loan record detail report. See Chapter 2.3, “Loan Record Detail Report,” for information on reading a loan record detail report. This electronic loan record detail report contains the same information as, and eventually will replace, the hardcopy loan record detail report. Electronic loan record detail reports are available to all schools that receive a draft or official cohort default rate notification letter.

The electronic loan record detail report is available as a preformatted report (report) or as a data file extract (extract). The report is representative of the hardcopy loan record detail report and can be accessed using standard word processing software. The extract allows a school to query the cohort default rate data based on the school’s needs.

An electronic loan record detail report provides schools with a more efficient way to review, sort, and analyze their cohort default rate data. Schools are strongly encouraged to use electronic loan record detail reports and may request one at any time. However, if a school did not receive a hardcopy loan record detail report and intends to submit a cohort default rate adjustment and/or appeal, the school must request the loan record detail report within 15 calendar days of receiving its official cohort default rate notification letter.

Any school that requests an electronic loan record detail report and has an average rate for the requested cohort fiscal year will automatically receive data for the prior two cohort fiscal years along with the data for the requested cohort fiscal year. All non-average rate schools will receive data only for the requested cohort fiscal year.

Instructions for Requesting an Electronic Loan Record Detail Report

A school or data manager may request a loan record detail report only for their entity. A school or data manager may not request a loan record detail report for another school or data manager.

A U.S. school can request an electronic loan record detail report using the NSLDS website. Once the request has been made, the loan record detail report is delivered to the Student Aid Internet Gateway (SAIG, which replaces the Title IV Wide Area Network) mailbox associated with the NSLDS User ID that made the request.

There are two types of NSLDS User IDs: an online services User ID and an online services and batch User ID. Because both User IDs have SAIG mailboxes, both can be used to request an electronic loan record detail report. However, if the online services User ID is used, the loan record detail report will be placed in the mailbox associated with that User ID and not in the mailbox associated with the online services and batch User ID. To obtain additional information, contact NSLDS Customer Service at 1-800-999-8219 or CPS/WAN Technical Support at 1-800-330-5947.

Because some foreign schools do not have access to the NSLDS online system, a foreign school that wants an electronic copy of its loan record detail report must request the electronic copy from Default Management.

Exact descriptions for navigating NSLDS in order to request the electronic loan record detail report or extract were not available at the time of publication for this Guide because the loan record detail report screens were still under development. Default Management will create a “General Information Tools: Instructions for Requesting an Electronic Loan Record Detail Report” supplement for this Guide once these lists are in final form. This supplement will be mailed to schools and data managers and will be available at

<http://www.ed.gov/offices/OSFAP/defaultmanagement/cdr.html>

You may also wish to visit NSLDS online at

<https://www.nslsdfap.ed.gov>

or

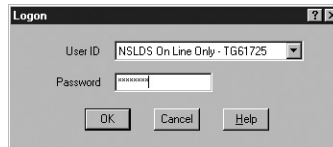
<http://sfa4schools.sfa.ed.gov>

Contact NSLDS Customer Service at 1-800-999-8219 for password assistance.

The following are steps to access EDconnect after making a request for an electronic loan record detail report.

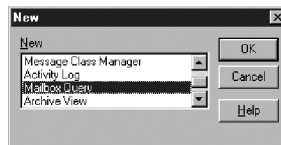
Step 1: Before downloading the electronic loan record detail report from the SAIG mailbox, ensure the ID you used when logging on to the NSLDS website is set up in the EDconnect software. If this has not been done, contact CPS/WAN Technical Support at 1-800-330-5947.

Step 2: Log onto the EDconnect software using the User ID associated with the NSLDS User ID that made the request for the electronic loan record detail report.



Step 3: Select "Now" from the Transmission menu.

Step 4: Once EDconnect has finished processing the Transmission Now request, select "Mailbox Query" from the New option on the File menu.



Step 5: EDconnect will provide a list of those files that are available for download. From the list of files available to be downloaded, identify the electronic loan record detail report that was requested.

Move to TO	Message Class	Item Number	Description	
<input type="checkbox"/>	DCREBOP	00316833286201767	DRAFT 98 RATE EXTRACT	10500
<input type="checkbox"/>	DCRRBOP	00316833286447762	DRAFT 98 RATE REPORT	10500

The electronic loan record detail reports will be listed using SAIG message classes. The message classes for the electronic loan record detail reports consist of eight characters:

- ❖ SHCDREOP for extract files
- ❖ SHCDRROP for report files

Step 6: Place a check mark in the Move to TQ column, next to the message class associated with the requested electronic loan record detail report.

Move to TQ	Message Class	Item Number	Description	S
<input checked="" type="checkbox"/>	DDRESBOP	003168933266281757	DRAFT 99 RATE EXTRACT	TG500
<input checked="" type="checkbox"/>	DDRR99OP	003168933268447782	DRAFT 99 RATE REPORT	TG500

Step 7: Select "Now" from the Transmission menu. EDconnect will download the file to the designated directory. At this point, a school can rename the file prior to saving it. A school may wish to name a file for the date the file was downloaded.

Step 8: Access the file.

For questions about the SAIG mailbox or downloading files, contact CPS/WAN Technical Support at 1-800-330-5947.

Requests for an average rate will have three cohort fiscal years of data in the message class.

Electronic Loan Record Detail Extract File Layout and Detailed Repayment Information Extract File Layout

The extract file layout contains:

- ❖ positions,
- ❖ field lengths,
- ❖ field formats,
- ❖ field names, and
- ❖ field descriptions.

The file layout is divided into three sections:

- ❖ Header Record Layout. This is the layout for the single header record of the file. This record contains general information about the detail records contained in the file. Figure 2.6.1 displays the Header Record Layout.

Figure 2.6.1
Header Record Layout

Position From	Position To	Field Length	Field Format	Name	Description of Field Content
1	20	20	Character	Filler	Filler
21	21	1	Numeric	Record Type	Indicator used to identify the header record. Value must be "1" (one).
22	29	8	Numeric	Organization ID Number	The eight-digit OPE ID code used to identify the school receiving the loan record detail report.
30	143	114	Character	Filler	Filler
144	203	60	Character	Organization Name	School's name
204	253	50	Character	Address	School's address
254	273	20	Character	City	School's city
274	275	2	Character	State	School's state
276	295	20	Character	Country	School's country
296	304	9	Numeric	Zip Code	School's zip code
305	312	8	Date	Request Date	Identifies the request date of the loan record detail report; format is CCYYMMDD.
313	320	8	Date	Rate Calculation Date	Identifies the date the rate was calculated; format is CCYYMMDD.
321	324	4	Date	Cohort Year	Identifies the cohort fiscal year associated with the report; format is CCYY.
325	331	7	Character	Title IV Program	Identifies the program type of loans included in the loan record detail report.
332	334	3	Character	Filler	Filler
335	335	1	Numeric	Filler	Filler

Figure 2.6.2

Detail Record Layout
(part 1 of 2)

- Detail Layout. This is the layout for the detail records in the file. These records contain all of the student and loan-specific information. Figure 2.6.2 displays the Detail Record Layout.

Position From	Position To	Field Length	Field Format	Name	Description of Field Content
1	20	20	Character	Filler	Filler
21	21	1	Character	Record Type	Indicator used to identify the detail record. Value must be "2" (two).
22	29	8	Character	School Code	An eight-digit OPE ID code used to identify the school submitting the loan record detail report request.
30	37	8	Character	Filler	Filler
38	46	9	Character	SSN	Title IV recipient's or beneficiary's Social Security Number.
47	47	1	Character	Usage 1 Code	Identifies how the loan is counted in the school's cohort default rate calculation.
48	65	18	Character	Filler	Filler
66	100	35	Character	Current Last Name	Title IV recipient's or beneficiary's current last name.
101	112	12	Character	Current First Name	Title IV recipient's or beneficiary's current first name.
113	113	1	Character	Student Middle Initial	Title IV recipient's or beneficiary's middle initial.
114	121	8	Numeric	Student Date of Birth	Title IV recipient's or beneficiary's date of birth.
122	129	8	Character	Original School Code	OPE ID code for the school that certified/originated the loan for the borrower.
130	137	8	Numeric	Begin Class Date	The date classes were scheduled to begin for the loan period covered by the loan.
138	145	8	Numeric	End Class Date	The date classes were scheduled to end for the loan period covered by the loan.
146	146	1	Character	Academic Level	Student's academic or grade level in school at the beginning of the specific period covered by the loan.
147	152	6	Character	Original Lender/ Servicer Code	Code for entity that provided the loan to the student; identifies the originating holder of the loan.
153	156	4	Character	Filler	Filler
157	162	6	Character	Current Lender/ Servicer Code	Current lender code.
163	166	4	Character	Current Lender/ Servicer Branch	Current lender branch.
167	168	2	Character	Loan Type	The type of loan.
169	170	2	Character	Loan Status Code	The status of the borrower's loan.
171	178	8	Numeric	Loan Status Code Date	Effective date of the loan status code.

Figure 2.6.2 (cont.) - Detail Record Layout (part 2 of 2)

Position From	Position To	Field Length	Field Format	Name	Description of Field Content
179	186	8	Numeric	Repay Date	Date loan entered repayment.
187	192	6	Numeric	Amount	Full amount of the loan.
193	195	3	Character	Code for Guarantor/ Servicer	Entity that guaranties the loan on behalf of the Department or entity that the Department contracts with to service Direct Loans.
196	203	8	Numeric	Guaranty Loan Date	Date that the guaranty agency insured a FFEL or the first date of disbursement for a Direct Loan.
204	211	8	Numeric	Default NegAm Date	Date that a default claim was paid on a FFEL or the day of default, for cohort default rate purposes, for Direct Loans or the day certain Direct Loans are considered in default, for cohort default rate purposes, if the loan has been in an income contingent repayment plan with payments of less than \$15 per month that resulted in negative amortization for a certain period of time.
212	213	2	Character	Claim Reason Code	Identifies the reason a claim was paid on a FFEL or if a Direct Loan has defaulted or, for some Direct Loan, if the loan entered into an income contingent repayment plan that resulted in negative amortization.
214	234	21	Character	Filler	Filler
235	235	1	Character	Enrollment Code	Student's enrollment status at the time the cohort default rate was calculated.
236	243	8	Numeric	Enrollment Code Date	Effective date of the Enrollment Status Code. If no data is available, the guaranty agency or Direct Loan servicer may use 01/01/1900.
244	244	1	Character	Program Type	Identifies loan program type "F" (FFEL) or "D" (Direct Loan).
245	249	5	Character	Filler	Filler
250	255	6	Numeric	Claim Amount	The claim amount.
256	261	6	Numeric	Outstanding Principal Balance	The original dollar amount of the loan.
262	263	2	Character	Usage 2 Code	Identifies how the borrower is counted in each individual loan program (i.e., the FFEL Program and/or the Direct Loan Program).
264	320	57	Character	Filler	Filler
321	324	4	Character	Cohort Fiscal Year	Identifies the cohort fiscal year; format is CCYY.
325	335	11	Character	Filler	Filler

Figure 2.6.3Trailer Record Layout
(part 1 of 2)

- ❖ Trailer Record Layout. This is the layout for the single trailer record of the file. This record contains selected summary calculations for the detail records contained in the file. Figure 2.6.3 is the Trailer Record Layout.

Position From	Position To	Field Length	Field Format	Name	Description of Field Content
1	20	20	Character	Filler	Filler
21	21	1	Character	Record Type	Indicator used to identify the trailer record. Value must be "3" (three).
22	29	8	Character	School Code	An eight-digit OPE code used to identify the school receiving the loan record detail report.
30	31	2	Character	Filler	Filler
32	39	8	Numeric	Actual Numerator Count	The total number of unduplicated borrowers reported in the numerator of the cohort default rate. The report count for the numerator represents the unduplicated borrowers listed with a "B" in the Usage 1 Code field.
40	47	8	Numeric	Actual Denominator Count	The total number of unduplicated borrowers reported in the denominator of the cohort default rate. The report count for the denominator represents the unduplicated borrowers listed with a "D" or "B" in the Usage 1 Code field.
48	55	8	Numeric	Report Count	Identifies the unduplicated number of borrowers included in the numerator of the cohort default rate calculation.
56	63	8	Numeric	Report Count	Identifies the unduplicated number of borrowers included in the denominator of the cohort default rate calculation.
64	71	8	Numeric	IC	Identifies the number of borrowers meeting income contingency repayment conditions on the loan record detail report.
72	79	8	Numeric	Individual Program Tally	The total number of unduplicated borrowers counted in the numerator of the FFEL Program.
80	87	8	Numeric	Individual Program Tally	The total number of unduplicated borrowers counted in the denominator of the FFEL Program.
88	95	8	Numeric	Individual Program Tally	The total number of unduplicated borrowers counted in the numerator of the Direct Loan Program.

Figure 2.6.3 (cont.) - Trailer Record Layout (part 2 of 2)

Position From	Position To	Field Length	Field Format	Name	Description of Field Content
96	103	8	Numeric	Individual Program Tally	The total number of unduplicated borrowers counted in the denominator of the Direct Loan Program.
104	135	32	Numeric	Filler	Filler
136	136	1	Character	Appealed Rate Flag	Identifies if the cohort default rate has been revised due to an adjustment/appeal.
137	146	10	Numeric	Dual Total Dollars in Default	Total dollars in default. The FFEL Program and Direct Loan Program entries within this field indicate the total dollar volume of defaulted loans included in the cohort default rate calculation.
147	156	10	Numeric	Dual Total Dollars in Repayment	Total dollars in repayment. The FFEL Program and Direct Loan Program entries within this field indicate the total dollar volume for loans that have entered into repayment during the cohort fiscal year in question.
157	166	10	Numeric	FFEL Total Dollars in Default	Dollars in default on FFEL Program.
167	176	10	Numeric	FFEL Total Dollars in Repayment	Dollars in repayment on FFEL Program.
177	186	10	Numeric	Direct Total Dollars in Default	Dollars in default on Direct Loan Program.
187	196	10	Numeric	Direct Total Dollars in Repayment	Dollars in repayment on Direct Loan Program.
197	206	10	Numeric	Total Insurance Claim Payments	Identifies the total dollar amount for insurance claim payments.
207	320	114	Character	Filler	Filler
321	324	4	Date	Trailer Sort Cohort Year	Identifies the cohort fiscal year; format is CCYY.
325	335	11	Character	Filler	Filler

Alphabetical Data Manager Contacts

The contact list that follows contains codes for the data manager for Federal Family Education Loans (FFELs) and William D. Ford Direct Loans (Direct Loans) included on a school's loan record detail report and detailed repayment information. The list is in alphabetical order by state followed by the data manager code.

If the data manager code is known, see the section of this chapter entitled "Numerical Data Manager Contacts."

Figure 2.6.4 lists Data Manager Codes in alphabetical order.

Figure 2.6.4

Alphabetical Data
Manager Codes
(part 1 of 2)

State and/or Territory	Data Manager Code
Alabama	701
Alaska	702
American Samoa	no number code
Arizona	804
Arkansas	705
California	706
Colorado	708
Connecticut	709
Delaware	710
Direct Loan Servicer	0101
District of Columbia	611
Educational Credit Management Corporation (ECMC)	927 and 951
Federated States of Micronesia, Marshall Islands, Republic of Palau	no number code
Florida	712
Georgia	713
Guam	no number code
Hawaii	815
Idaho	716
Illinois	717
Indiana	718
Iowa	719
Kansas	620
Kentucky	721
Louisiana	722
Maine	723
Maryland	724
Massachusetts	725
Michigan	726
Minnesota	727
Mississippi	728
Missouri	729
Montana	730
Nebraska	731

State and/or Territory	Data Manager Code
Nevada	732
New Hampshire	733
New Jersey	734
New Mexico	735
New York	736
North Carolina	737
North Dakota	738
Northern Mariana Islands	no number code
Ohio	739
Oklahoma	740
Oregon	741
Pennsylvania	742
Puerto Rico	772
Rhode Island	744
South Carolina	745
South Dakota	746
Tennessee	747
Texas	748
U.S. Department of Education	555, 627, and 631
USA Funds	800
Utah	749
Vermont	750
Virgin Islands	778
Virginia	751
Washington	753
West Virginia	654
Wisconsin	755
Wyoming	656

Figure 2.6.4 (cont.)

Alphabetical Data
Manager Codes
(part 2 of 2)

Numerical Data Manager Contacts

The contact list that follows contains the names, addresses, telephone numbers, email and website addresses (if available), and points of contact for FFELs and Direct Loans included on a school's loan record detail report and detailed repayment information. The list is in numerical order by the data manager code as identified on the loan record detail report or the detailed repayment information, followed by the name of the state/territory/entity primarily associated with the identified code. A data manager should contact Default Management when any changes occur. In addition, if a school discovers that the information listed for a data manager is incorrect, it should contact Default Management.

If the data manager code is not known, see the section of this chapter entitled "Alphabetical Data Manager Contacts."

Figure 2.6.5

Numerical Data Manager
Contacts (part 1 of 8)

Figure 2.6.5 lists the data manager contact information in numerical order.

<p>0101 Direct Loan Servicing Center U.S. Department of Education Direct Loan Servicer Attn: Default Rate Appeals Section 501 Bleecker Street Utica, NY 13501 School Services Representative 1-888-877-7658 http://www.dlservicer.ed.gov/schools</p>	<p>555 U.S. Department of Education By commercial overnight mail/courier delivery: U.S. Department of Education Default Management 830 First Street, NE Washington, DC 20002</p> <p>By U.S. Postal Service: U.S. Department of Education Default Management 400 Maryland Avenue, SW Washington, DC 20202-5353</p> <p>1-202-708-9396 http://www.ed.gov</p> <p>This is the address for FFEL Program loans currently maintained by the Department. For Direct Loan Program loans, see Code 0101.</p>
<p>611 District of Columbia American Student Assistance Corporation Attn: Cohort Section 330 Stuart Street Boston, MA 02116 Ms. Sue Pottenger 1-800-999-9080 ext. 3209 pottenger@amsa.com http://www.amsa.com</p>	<p>620 Kansas USA Funds Attn: Mr. Bruce Bement Suite 230 Crosspoint Plaza One 10475 Crosspoint Blvd. Indianapolis, IN 46256-3323 Mr. Bruce Bement 1-317-806-1256 bbement@usafunds.org http://www.usafunds.org</p>
<p>627 U.S. Department of Education See the address in Box 555</p>	<p>631 U.S. Department of Education See the address in Box 555</p>
<p>654 West Virginia Pennsylvania Higher Education Assistance Agency Attn: Program Review HQ4 1200 North 7th Street Harrisburg, PA 17102-1444 Ms. Lisa Hoffman 1-717-720-2180 lhoffman@pheaa.org http://www.pheaa.org</p>	<p>656 Wyoming USA Funds Attn: Mr. Bruce Bement Suite 230 Crosspoint Plaza One 10475 Crosspoint Blvd. Indianapolis, IN 46256-3323 Mr. Bruce Bement 1-317-806-1256 bbement@usafunds.org http://www.usafunds.org</p>

Figure 2.6.5 (cont.) - Numerical Data Manager Contacts (part 2 of 8)

<p>701 Alabama Kentucky Higher Education Assistance Authority Attn: Policy and Client Services Branch 1050 U.S. 127 South Frankfort, KY 40601-4323 Ms. Elaine Brumback 1-502-696-7278 ebrumback@kheaa.com http://www.kheaa.com</p>	<p>702 Alaska USA Funds Attn: Mr. Bruce Bement Suite 230 Crosspoint Plaza One 10475 Crosspoint Blvd. Indianapolis, IN 46256-3323 Mr. Bruce Bement 1-317-806-1256 bbement@usafunds.org http://www.usafunds.org</p>
<p>705 Arkansas Student Loan Guaranty Foundation of Arkansas Attn: Ms. Brenda Steele 219 South Victory Little Rock, AR 72201-1884 Ms. Brenda Steele 1-501-688-7648 bsteele@slgfa.org http://www.slgfa.org</p>	<p>706 California EDFUND Attn: Loan Detail Information Office Cohort Default Rate Appeals and Disputes 3300 Zinfandel Drive P.O. Box 419045 Rancho Cordova, CA 95741-9045 Ms. Kevis Foley-Bumgardner 1-916-526-8068 kfoley@edfund.org http://www.edfund.org</p>
<p>708 Colorado Colorado Student Loan Program Attn: Compliance, Training & Investigation Dept. 999 18th Street, Suite 425 Denver, CO 80202-2471 Mr. Eric Cronkright 1-303-305-3282 ecronkright@cslp.org http://www.cslp.org</p>	<p>709 Connecticut Connecticut Student Loan Foundation Attn: Manager of Guarantee Operations P.O. Box 1009 525 Brook Street Rocky Hill, CT 06067 Ms. Sandy Barsom 1-860-257-4001 ext. 247 sbarsom@mail.cslf.org http://www.cslf.com</p>
<p>710 Delaware Pennsylvania Higher Education Assistance Agency Attn: Program Review HQ4 1200 North 7th Street Harrisburg, PA 17102-1444 Ms. Lisa Hoffman 1-717-720-2180 lhoffman@pheaa.org http://www.pheaa.org</p>	<p>712 Florida Florida Department of Education Bureau of Student Financial Assistance Attn: Ms. Reita Kelley Northwood Centre 1940 North Monroe Street; Suite 70 Tallahassee, FL 32303-4759 Ms. Reita Kelley 1-850-410-5252 1-800-366-3475 kelleyr@mail.doe.state.fl.us</p>

Figure 2.6.5 (cont.) - Numerical Data Manager Contacts (part 3 of 8)

<p>713 Georgia Georgia Higher Education Assistance Corporation Attn: Program Administration 2082 East Exchange Place, Suite 200 Tucker, GA 30084-5305 Ms. Carole Jones 1-770-724-9137 carole@mail.gsfc.state.ga.us http://www.gsfc.org</p>	<p>716 Idaho Northwest Education Loan Association Attn: School Compliance Representative 500 Coleman Building 811 First Avenue Seattle, WA 98104 Ms. Linda Shannon 1-206-461-5325 lindas@nela.net http://www.nela.net</p>
<p>717 Illinois Illinois Student Assistance Commission Attn: Compliance Analyst 1755 Lake Cook Road Deerfield, IL 60015 Ms. Terry Dallas 1-847-948-8500 ext. 3306 tdallas@isac.org http://www.isac-online.org</p>	<p>718 Indiana USA Funds Attn: Mr. Bruce Bement Suite 230 Crosspoint Plaza One 10475 Crosspoint Blvd. Indianapolis, IN 46256-3323 Mr. Bruce Bement 1-317-806-1256 bbement@usafunds.org http://www.usafunds.org</p>
<p>719 Iowa Iowa College Student Aid Commission Attn: Associate Director, Claims and Collections 200 10th Street, 4th Floor Des Moines, IA 50309-3609 Mr. Brian Mohr 1-515-242-3356 brian.mohr@csac.state.ia.us http://www.state.ia.us/government/icsac</p>	<p>721 Kentucky Kentucky Higher Education Assistance Authority Attn: Policy and Client Services Branch 1050 U.S. 127 South Frankfort, KY 40601-4323 Ms. Elaine Brumback 1-502-696-7278 ebrumback@kheaa.com http://www.kheaa.com</p>
<p>722 Louisiana Louisiana Office of Student Financial Assistance Attn: Program Review 1885 Wooddale Boulevard Baton Rouge, LA 70806 Ms. Blair Daggs 1-225-922-0584 1-800-259-5626 ext. 0584 bdaggs@osfa.state.la.us http://www.osfa.state.la.us</p>	<p>723 Maine USA Funds Attn: Mr. Bruce Bement Suite 230 Crosspoint Plaza One 10475 Crosspoint Blvd. Indianapolis, IN 46256-3323 Mr. Bruce Bement 1-317-806-1256 bbement@usafunds.org http://www.usafunds.org</p>

Figure 2.6.5 (cont.) - Numerical Data Manager Contacts (part 4 of 8)

<p>724 Maryland USA Funds Attn: Mr. Bruce Bement Suite 230 Crosspoint Plaza One 10475 Crosspoint Blvd. Indianapolis, IN 46256-3323 Mr. Bruce Bement 1-317-806-1256 bbement@usafunds.org http://www.usafunds.org</p>	<p>725 Massachusetts American Student Assistance Corporation Attn: Cohort Section 330 Stuart Street Boston, MA 02116 Ms. Sue Pottenger 1-800-999-9080 ext. 3209 pottenger@amsa.com http://www.amsa.com</p>
<p>726 Michigan Michigan Higher Education Assistance Authority Attn: Audit and Program Review Section Hannah Building, First Floor 608 W. Allegan Road Lansing, MI 48933-1524 Mr. Dan Tryon 1-517-373-4981 tryond@state.mi.us</p>	<p>727 Minnesota Great Lakes Higher Education Guaranty Corporation Attn: Ms. Lori Yaun 2401 International Lane Madison, WI 53704 Ms. Lori Yaun 1-608-246-1622 lyaun@glhec.org http://www.glhec.org</p>
<p>728 Mississippi USA Funds Attn: Mr. Bruce Bement Suite 230 Crosspoint Plaza One 10475 Crosspoint Blvd. Indianapolis, IN 46256-3323 Mr. Bruce Bement 1-317-806-1256 bbement@usafunds.org http://www.usafunds.org</p>	<p>729 Missouri Missouri Student Loan Program Attn: Senior Associate for Compliance 3515 Amazonas Drive Jefferson City, MO 65109-5717 Ms. Ruth Chrismore 1-573-751-8748 ruth.chrismore@mocbhe.gov http://www.cbhe.state.mo.us</p>
<p>730 Montana Montana Guaranteed Student Loan Program Attn: Compliance Officer 2500 Broadway Helena, MT 59601 Mr. Ron Muffick 1-406-444-0369 1-800-537-7508 rmuffick@mgsplp.state.mt.us http://www.mgsplp.state.mt.us</p>	<p>731 Nebraska NSLP Attn: Program Review and Compliance 1300 O Street Lincoln, NE 68508 Ms. Dorothy Confer 1-402-479-6959 dorothyc@nslp.org http://www.nslp.org</p>

Figure 2.6.5 (cont.) - Numerical Data Manager Contacts (part 5 of 8)

<p>732 Nevada USA Funds Attn: Mr. Bruce Bement Suite 230 Crosspoint Plaza One 10475 Crosspoint Blvd. Indianapolis, IN 46256-3323 Mr. Bruce Bement 1-317-806-1256 bbement@usafunds.org http://www.usafunds.org</p>	<p>733 New Hampshire New Hampshire Higher Education Assistance Foundation Attn: Director of Compliance 4 Barrell Court Concord, NH 03302 Mr. Lonny Meloon 1-603-227-5309 lmeloon@gsmr.org http://www.nhheaf.org OR http://www.gsmr.org</p>
<p>734 New Jersey New Jersey Higher Education Student Assistance Authority Attn: Mr. Derek V. Gatling 4 Quakerbridge Plaza Building P.O. Box 548 Trenton, NJ 08625 Mr. Derek V. Gatling 1-609-588-3996 dgatling@hesaa.org http://www.hesaa.org</p>	<p>735 New Mexico New Mexico Student Loan Guarantee Corporation Attn: Compliance and Program Review Office 3900 Osuna, N.E. Albuquerque, NM 87109 Ms. Carolyn Holder 1-505-345-8821 ext. 261 holderc@nmslhc.org http://www.nmslhc.org</p>
<p>736 New York New York State Higher Education Services Corporation Attn: Lender Service 99 Washington Avenue Albany, NY 12255 Mr. Larry LaVallee 1-518-473-1670 llavallee@hesc.com http://www.hesc.com</p>	<p>737 North Carolina North Carolina State Education Assistance Authority Attn: Claim Accounting and Compliance Review 10 Alexander Drive Research Triangle Park, NC 27709 Ms. Robbin Sutton 1-919-248-4629 RobbinS@ncseaa.edu http://www.ncseaa.edu</p>
<p>738 North Dakota Student Loans of North Dakota Attn: Compliance Officer 715 East Broadway Bismarck, ND 58501 Ms. Char Feist 1-701-328-5753 cfeist@state.nd.us http://www.banknd.com/slnd</p>	<p>739 Ohio For NON-DEFAULTED LOANS Great Lakes Higher Education Guaranty Corporation Attn: Ms. Lori Yaun 2401 International Lane Madison, WI 53704 Ms. Lori Yaun 1-608-246-1622 lyaun@glhec.org http://www.glhec.org For DEFAULTED LOANS See the address in box 555</p>

Figure 2.6.5 (cont.) - Numerical Data Manager Contacts (part 6 of 8)

<p>740 Oklahoma Oklahoma State Regents for Higher Education Guaranteed Student Loan Program Attn: Ms. Mary Heid 421 Northwest 13th Street Oklahoma City, OK 73104 Ms. Mary Heid 1-405-234-4489 mheid@ogslp.org http://www.ogslp.org</p>	<p>741 Oregon Oregon Student Assistance Commission Attn: Program Review 1500 Valley River Drive Suite 100 Eugene, OR 97401 Ms. Barbara Briggs 1-541-687-7376 barbara.l.briggs@state.or.us http://www.osac.state.or.us</p>
<p>742 Pennsylvania Pennsylvania Higher Education Assistance Agency Attn: Program Review HQ4 1200 North 7th Street Harrisburg, PA 17102-1444 Ms. Lisa Hoffman 1-717-720-2180 lhoffman@pheaa.org http://www.pheaa.org</p>	<p>744 Rhode Island Rhode Island Higher Education Assistance Authority Attn: Cohort Appeals 560 Jefferson Boulevard Warwick, RI 02886-1320 Mr. Charles Totoro 1-401-736-1141 ctotoro@riheaa.org http://www.riheaa.org</p>
<p>745 South Carolina South Carolina State Education Assistance Authority Attn: Mr. Mike Fox Interstate Center, Suite 212 16 Berryhill Road Columbia, SC 29212 Mr. Mike Fox Ms. Sherry Highbaugh 1-803-798-7960 mike_fox@slc.sc.edu seaass@slc.sc.edu http://www.slc.sc.edu</p>	<p>746 South Dakota Education Assistance Corporation Attn: Vice President of Preclaim, Claim, and Collection 115 First Avenue, S.W. Aberdeen, SD 57401 Ms. Ellen Welke 1-605-622-4340 ewelke@eac-easci.org http://www.eac-easci.org</p>
<p>747 Tennessee Tennessee Student Assistance Corporation Attn: School Relations Specialist Suite 1950 404 James Robertson Parkway Nashville, TN 37243-0820 Ms. Stephanie Aylor 1-615-741-1346 saylor@mail.state.tn.us http://www.state.tn.us/tsac</p>	<p>748 Texas Texas Guaranteed Student Loan Corporation Attn: Compliance Analyst 2929 Longhorn Boulevard, Suite 106 Austin, TX 78758 Mr. Ken Johnson 1-512-219-4701 ken.johnson@tgslc.org http://www.tgslc.org/tgslc</p>

Figure 2.6.5 (cont.) - Numerical Data Manager Contacts (part 7 of 8)

<p>749 Utah Utah Higher Education Assistance Authority Attn: Manager of Compliance and Program Review Three Triad Center, Suite 550 355 West North Temple Salt Lake City, UT 84180-1205 Mr. Jed Spencer 1-801-321-7220 jspencer@utahsbr.edu http://www.uheaa.org</p>	<p>750 Vermont Vermont Student Assistance Corporation Attn: Manager of School Policy and Compliance The Champlain Mill 1 Main Street Winooski, VT 05404 Ms. Marcia Vance 1-802-654-3770 ext. 273 1-800-660-3561 ext. 273 vance@vsac.org http://www.vsac.org</p>
<p>751 Virginia ECMC Guarantee Servicing Attn: Compliance Specialist 7325 Beaufont Springs Drive, Suite 200 Richmond, VA 23225-5546 Ms. Linda Woodley 1-888-775-3262 ext. 8024 lwoodley@ecmc.org http://www.ecmc.org</p>	<p>753 Washington Northwest Education Loan Association Attn: School Compliance Representative 500 Coleman Building 811 First Avenue Seattle, WA 98104 Ms. Linda Shannon 1-206-461-5325 lindas@nela.net http://www.nela.net</p>
<p>755 Wisconsin Great Lakes Higher Education Guaranty Corporation Attn: Ms. Lori Yaun 2401 International Lane Madison, WI 53704 Ms. Lori Yaun 1-608-246-1622 lyaun@glhec.org http://www.glhec.org</p>	<p>772 Puerto Rico Great Lakes Higher Education Guaranty Corporation Attn: Ms. Lori Yaun 2401 International Lane Madison, WI 53704 Ms. Lori Yaun 1-608-246-1622 lyaun@glhec.org http://www.glhec.org</p>
<p>778 Virgin Islands Great Lakes Higher Education Guaranty Corporation Attn: Ms. Lori Yaun 2401 International Lane Madison, WI 53704 Ms. Lori Yaun 1-608-246-1622 lyaun@glhec.org http://www.glhec.org</p>	<p>800 USA Funds USA Funds Attn: Mr. Bruce Bement Suite 230 Crosspoint Plaza One 10475 Crosspoint Blvd. Indianapolis, IN 46256-3323 Mr. Bruce Bement 1-317-806-1256 bbement@usafunds.org http://www.usafunds.org</p>

Figure 2.6.5 (cont.) - Numerical Data Manager Contacts (part 8 of 8)

<p>804 Arizona USA Funds Attn: Mr. Bruce Bement Suite 230 Crosspoint Plaza One 10475 Crosspoint Blvd. Indianapolis, IN 46256-3323 Mr. Bruce Bement 1-317-806-1256 bbement@usafunds.org http://www.usafunds.org</p>	<p>815 Hawaii USA Funds Attn: Mr. Bruce Bement Suite 230 Crosspoint Plaza One 10475 Crosspoint Blvd. Indianapolis, IN 46256-3323 Mr. Bruce Bement 1-317-806-1256 bbement@usafunds.org http://www.usafunds.org</p>
<p>927 Educational Credit Management Corporation (ECMC) ECMC Guarantee Servicing Attn: Compliance Specialist 7325 Beaufont Springs Drive, Suite 200 Richmond, VA 23225-5546 Ms. Linda Woodley 1-888-775-3262 ext. 8024 lwoodley@ecmc.org http://www.ecmc.org</p>	<p>951 Educational Credit Management Corporation (ECMC) ECMC Guarantee Servicing Attn: Compliance Specialist 7325 Beaufont Springs Drive, Suite 200 Richmond, VA 23225-5546 Ms. Linda Woodley 1-888-775-3262 ext. 8024 lwoodley@ecmc.org http://www.ecmc.org</p>
<p>American Samoa (no number code) USA Funds Attn: Mr. Bruce Bement Suite 230 Crosspoint Plaza One 10475 Crosspoint Blvd. Indianapolis, IN 46256-3323 Mr. Bruce Bement 1-317-806-1256 bbement@usafunds.org http://www.usafunds.org</p>	<p>Federated States of Micronesia, Marshall Islands, and Republic of Palau (no number code) USA Funds Attn: Mr. Bruce Bement Suite 230 Crosspoint Plaza One 10475 Crosspoint Blvd. Indianapolis, IN 46256-3323 Mr. Bruce Bement 1-317-806-1256 bbement@usafunds.org http://www.usafunds.org</p>
<p>Guam (no number code) USA Funds Attn: Mr. Bruce Bement Suite 230 Crosspoint Plaza One 10475 Crosspoint Blvd. Indianapolis, IN 46256-3323 Mr. Bruce Bement 1-317-806-1256 bbement@usafunds.org http://www.usafunds.org</p>	<p>Northern Mariana Islands (no number code) USA Funds Attn: Mr. Bruce Bement Suite 230 Crosspoint Plaza One 10475 Crosspoint Blvd. Indianapolis, IN 46256-3323 Mr. Bruce Bement 1-317-806-1256 bbement@usafunds.org http://www.usafunds.org</p>

