

Software Developers Webinar

August 20, 2015

COD Update for Award Year 2015 - 2016

Agenda

- CPS: Erika Hutko
- COD: Marie Fitzpatrick
- EdExpress: Glenn Kirksey

CPS Update for Software Vendors

Erika Hutko | August 2015
U.S. Department of Education
Software Vendors Webinar

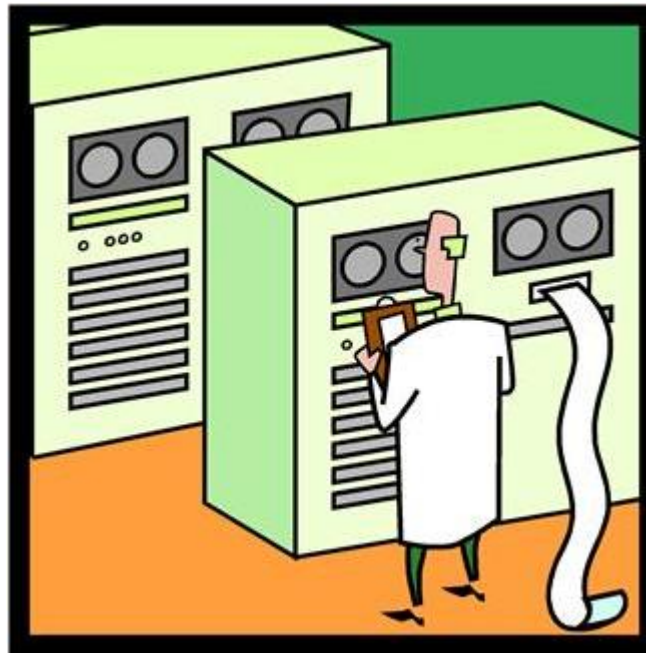
The Central Processing System (CPS) update will provide “heads up” information for programmers and data processing staff about the 2016-2017 changes to the Institutional Student Information Record (ISIR) layout and the CPS enhancements.

Presenter: Erika Hutko

Agenda

- CPS Enhancements
- Institutional Student Information Record (ISIR) Changes
- CPS Test System
- Important Dates

2016-2017 CPS Enhancements



2016-2017 CPS Enhancements

Income Threshold for Automatic Zero EFC increased
from \$24,000 to \$25,000

2016-2017 CPS Enhancements

- NSLDS Data Changes
 - Post screening reason codes redefined
- New Comment (394) for Parent 1 & Parent 2 same SSN condition
- Modify How School Codes are Reported on the ISIR
- Verification Group Changes

2016-2017 CPS Enhancements

Changes to Post-screening Reason Codes redefined as:

- 08 = Not in use
- 20 = Met or exceeded Pell lifetime limit
- 22 = Close to Pell lifetime limit

2016-2017 “Good to Know” CPS Enhancements

A Compute edit will be added to generate a SAR comment (394) for filers who enter the same SSN for Parent 1 and Parent 2 and have a Parents Marital Status of either “Married” or “Unmarried and both parents living together.”

2016-2017 “Good to Know” CPS Enhancements

Modify How School Codes are Reported on the ISIR

Schools participating in the Title IV programs have requested that all other federal school codes be removed from the ISIRs being sent to schools. FSA wants to continue to provide FSCs on ISIRs to State Agencies and on all SARs to students as currently generated.

STEP SIX (Q103)

School #1	999999	Housing #1
School #2	999999	Housing #2
School #3	999999	Housing #3
School #4	999999	Housing #4
School #5	999999	Housing #5
School #6	999999	Housing #6

XXXXXX

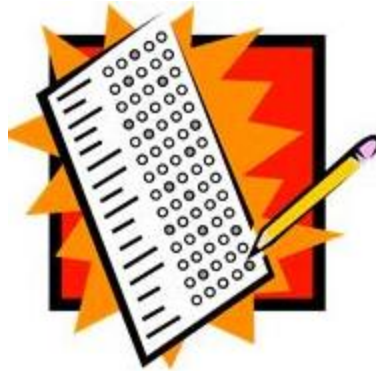
2016-2017 Verification Process

“Good to know” Enhancements

Verification Tracking Flag Groups:

Verification Tracking Flag	Verification Tracking Group	Verification Description
V1	Standard Verification	Record selected because conditions based on statistical analysis error-prone risk model were met
V2	FSA USE ONLY	FSA USE ONLY
V3	FSA USE ONLY	FSA USE ONLY
V4	Custom Verification Group	Record selected for Identity /statement of education purpose criteria; high school completion status and child support/SNAP if either were included on the FAFSA
V5	Aggregate Verification Group	Record selected for High school completion status , identity/statement of educational purpose and the items in the “Standard Verification” group
V6	Household Resources Verification Group	Record selected for other income “Standard Verification” and certain other untaxed income

CPS Test System



2015-2016 CPS Test System

- 2015-2016 Final Application Processing Software Developers Specifications posted January 13, 2015
- Updates will be provided, as needed

2016-2017 CPS Test System

- Mechanism for you to confirm that your system –
 - Meets specifications for interfacing with CPS
 - Is calculating correct results
- Allows you to –
 - Test applications and corrections
 - Receive ISIR data

2016-2017 CPS Test System

- Slated to become available late December and will remain available through the end of the processing cycle
- User Guide scheduled to be posted to Federal Student Aid Download Web site ([FSAdownload.ed.gov](https://fsa.download.ed.gov)) around October 2015
- An Electronic Announcement will be posted when the test system goes live

2016-2017 CPS Test System

- Test files will be available at FSAdownload.ed.gov
- Separate input and output files will be posted for testing specifications
- **Friendly Reminder:** CPS is *still* in test until FSA accepts the system and production starts on January 2, 2016 so we appreciate your patience.

Important Dates



Important Dates

- August 2015
 - ***2016-2017 Summer DRAFT Application Processing System Specifications for Software Developers***
- August 2015
 - ***2016-2017 Summer Draft Electronic Data Exchange (EDE) Technical Reference*** (including the ISIR Record Layout and ISIR Cross-Reference)
- September 2015
 - ***2016-2017 EFC Formula Guide on the IFAP Web site***

Important Dates

- October 2015
 - ***2016-2017 CPS Test System User Guide***
- October 2015
 - ***2016-2017 ISIR Guide***
- October 2015
 - ***2016-2017 Electronic Data Exchange (EDE) Technical Reference- Final***

Important Dates

- October 2015
 - ***2016-2017 SAR Comment Codes and Text***
- December 2015
 - The CPS Test System is slated to be made available

Important Dates

- January 1, 2016
 - 2016-2017 *FAFSA on the Web* site available to students
 - 2016-2017 FAA Access to CPS Online Web site available
- January 2, 2016
 - CPS to begin accepting and processing 2016-2017 FAFSA® applications

Contact Information

We appreciate your feedback and comments

Erika Hutko

Erika.hutko@ed.gov

Cheryl Tisdale

Cheryl.tisdale@ed.gov

See you next update!

Common Origination & Disbursement (COD)

COD Update for Award Year 2015 - 2016

Marie Fitzpatrick
Federal Student Aid
Chicago, IL
marie.fitzpatrick@ed.gov
312.730.1549

COD Update for Award Year 2015 - 2016

Wood Mason
Federal Student Aid
Atlanta, GA
wood.mason@ed.gov
770.383.9662



Upcoming COD Releases

COD plans on implementing two (2) additional releases for award year 2015-2016

- COD Release 14.2 is scheduled for October 9, 2015
 - ✓ *School-facing changes*

AND

- ✓ *Processing change in reporting disbursements and Student Eligibility Codes (SEC)*
- COD Release 14.3 is scheduled for early Winter, 2015
 - ✓ *No schema-impacting enhancements*

Upcoming COD Releases

COD's "New Award Year Setup" for Award Year 2016-2017 is scheduled to be implemented on March 11, 2016

- At this time there is no indication of schema impacting enhancements or changes

Upcoming COD Releases

“School-facing” enhancements in the October release will include...

- The “30-Day Warning Report” will be re-named and will be modified to be parameter driven by days
 - ✓ *Re-named “Direct Loan Booking Warning Report”*
 - ✓ *Will remain “as-is” the near future*
 - *We’ll notify the community of any change*
- COD will add “Live Chat” to the COD Website
 - ✓ *Via the “Contact Us” screen*

Upcoming COD Releases

“School-facing” enhancements in the October release will include...

- Pell Grant Administrative Cost Allowance (ACA) payments will no longer be sent directly to the school bank account
 - ✓ *Schools will need to draw their next ACA payment from G5*
 - *Next payment is scheduled for March, 2016*
- Option to download “select” data in CSV format
 - ✓ *School Events Search*
 - ✓ *Batch Action Queue & Report Request Searches*
 - ✓ *User Search*
 - ✓ *Cash Activity Screen*
 - ✓ *Refunds of Cash screen*

Upcoming COD Releases

“School-facing” enhancements in the October release will include...

- COD will allow actual disbursement amount and date changes in the same transaction
 - ✓ *COD Reject Edit Code #057 will be retired*
 - *A change/adjustment to a Disbursement Date and Disbursement Amount were submitted on the same transaction. Adjustment to Disbursement Amount has been rejected*
- COD will be updated with new/altered Student Eligibility Codes and to accommodate students enrolled in an eligible career pathway program

Student Eligibility Code

Student Eligibility Code

The Student Eligibility Code (SEC) is a required field for all programs. A clarification was recently added that may affect some SEC value submissions:

- Renamed value “02” *ATB-College Credits – First Enrolled before 7/1/12*
 - ✓ *The “02” value should only be submitted for students who qualify for Title IV aid under the alternate ATB provisions and not for any student meeting the standard eligibility provision. It should not be used for graduate students.*
- Value “09” *Academic Transcript of 2-yr Program Acceptable for Full Credit Transfer to BA Program*
 - ✓ *For graduate or professional programs where a high school diploma or its equivalent is not necessary for admission to the program, and the student has a bachelor's degree, submit “09”.*

<StudentEligibilityCode> Changes

COD will be updated with new and altered SEC values to accommodate students enrolled in an eligible career pathway program. These changes are applicable for 2015-2016 and forward.

Values with title changes in Rel. 14.2:

- 01** – *ATB-Test Completed – First Enrolled before 7/1/12*
- 02** – *ATB-College Credits – First Enrolled before 7/1/12*
- 07**– *GED or State Authorized H.S. Equivalent Certificate*

Values removed in Rel. 14.2:

- 08** – *State Authorized High School Equivalent Certificate*

<StudentEligibilityCode> Changes

Added values in Rel. 14.0 or Rel. 14.2:

- 09** – *Academic Transcript of 2-yr Program Acceptable for Full Credit Transfer to BA Program*
- 10** – *Program leads to Associates Degree, Excelled in High School, and meets Admissions Requirements*
- 11** – *ATB-Test Completed – First Enrolled 7/1/12 to 6/30/15*
- 12** – *ATB-Test Completed – First Enrolled 7/1/15 or After*
- 13** – *ATB-College Credits – First Enrolled 7/1/12 to 6/30/15*
- 14** – *ATB-College Credits – First Enrolled 7/1/15 or After*

<StudentEligibilityCode> Changes

After Release 14.2 in October 2015-2016 initial and maintenance records with the SEC value of “08” will be rejected with Edit 198.

- If you currently have 2015-2016 records with SEC value of “08” please consider reassigning them value “07” before the 14.2 release so that they will not be rejected.
- SEC value “07” is being updated to incorporate the “*State Authorized High School Equivalent Certificate*” that the “08” value represented.

<AbilitytoBenefitTestCode> Changes

There have been changes to the Ability to Benefit (ATB) tests. Many of them have expired or will shortly and COD edits the ATB Completion date submitted against the expiration of the test.

- New Ability to Benefit test value “12” will be added with COD Release 14.2
- Changed expiration dates for values “01”, “02”, “04”, “07”, “09”, and “11”.
- Edit 196 will trigger if the ATB Completion Date submitted is after the expiration date of the ATB Test submitted.

Recent Resources on SEC and ATB

Resources on eligible career pathway programs and resulting changes to the Student Eligibility Code

- DCL dated May 22, 2015, GEN-15-09, *“Title IV Eligibility for Students Without a Valid High School Diploma Who Are Enrolled in Eligible Career Pathway Programs”*
- Electronic Announcement dated July 9, 2015, *“Operational Guidance on Reporting Student Eligibility Codes for All Students, Including Those Who Are Enrolled in an Eligible Career Pathway Program”*
- COD Technical Reference posted August 19, 2015

Resources on recent Ability to Benefit Test changes

- Electronic Announcement dated June 24, 2015, *“Approved Ability-to-Benefit (ATB) tests”*
- COD Technical Reference posted August 19, 2015

Subsidized Usage Limit Applies (SULA)

SULA



150% limit is met and further eligibility is lost when Remaining Eligibility Period is zero (or less)

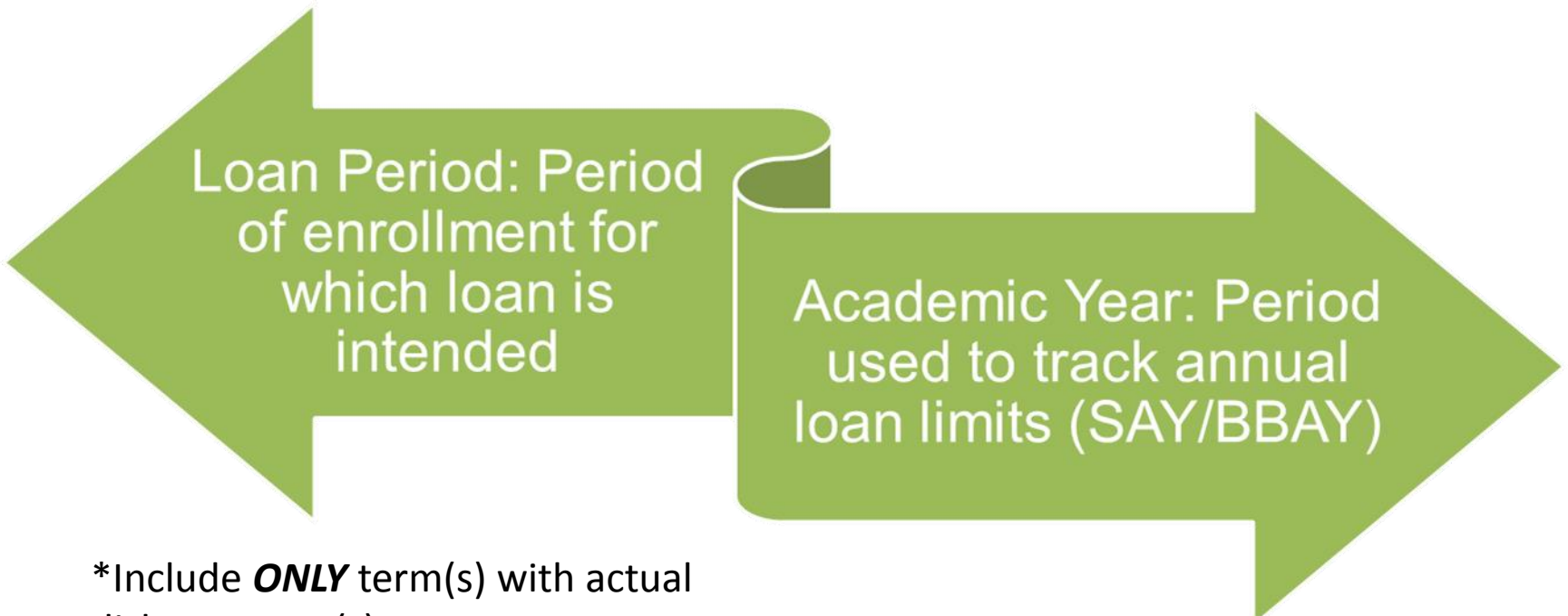
SULA

We are beginning to see a frequent return of COD Reject Edit Code #206

- “The Remaining Subsidized Eligibility Period is less than zero for this award”
- Results when a school does NOT adjust loan data correctly after a student ceases to maintain eligibility for the loan or where loan data is NOT reported correctly
 - ✓ *The Academic Year start/end dates are not reported accurately*
 - ✓ *Pending disbursements/loan amounts are not reduced to \$0*
 - ✓ *Loan periods are not being adjusted when required*
 - ✓ *Loan amounts are not being adjusted to equal actual disbursements*

COD Calculates Subsidized Usage Period

$$\frac{\text{\# days in the loan period}^*}{\text{\# days in the academic year}} = \text{Subsidized Usage Period}^{**}$$



Loan Period: Period of enrollment for which loan is intended

Academic Year: Period used to track annual loan limits (SAY/BBAY)

*Include **ONLY** term(s) with actual disbursement(s)

**Pro-rated by enrollment status

COD Calculates Subsidized Usage Period

Academic Year mistakes...

- The Academic Year for a Program measured in credit hours **MUST** be a minimum of 30 weeks and 24 Semester (36 Credit) hours
 - ✓ *No credit hour requirement if a Graduate/Professional Student Program*
- The Academic Year for a Program measured in clock-hours must be a minimum of 26 weeks and 900 clock-hours
- Under the Subsidized Usage Limit Applies (SULA) regulations, schools are required to report their Academic Year in weeks or months or years on the Loan Origination Record (LOR)
 - ✓ *Only one format allowed on the LOR*
 - ✓ *COD Reject Edit Code #209 rejects reported Weeks Academic Year less than 26 weeks*

COD Calculates Subsidized Usage Period

Award Information	
Award ID	
Award Amount Approved	\$3,500.00
Award Amount Disbursed	\$0.00
Award Start Date	09/09/2015
Award End Date	04/15/2016
Grade Level	1st year, undergraduate/never attended college
Program Credential Level	03 - Bachelor's Degree
Special Programs	
Published Program Length Years	4
Published Program Length Months	
Published Program Length Weeks	
Weeks Programs Academic Year	
CPS Transaction Number	02
Disclosure Print Indicator	COD Prints (Sends to Borrower)
Booked Date	
Dependency Status	Dependent
Loan Fee Percentage	1.068%
Academic Start Date	09/09/2015
Academic End Date	04/15/2016
Interest Rebate Percentage	0.000%
Less than Full-time Flag	
Loan Default / Grant Overpay	N
Student Eligibility Code	06 - High School Diploma

Correct!

COD Calculates Subsidized Usage Period

Award Information	
Award ID	
Award Amount Approved	\$3,500.00
Award Amount Disbursed	\$0.00
Award Start Date	01/09/2015
Award End Date	04/09/2015
Grade Level	1st year, undergraduate/never attended college
Program Credential Level	03 - Bachelor's Degree
Special Programs	
Published Program Length Years	4
Published Program Length Months	
Published Program Length Weeks	
Weeks Programs Academic Year	
CPS Transaction Number	02
Disclosure Print Indicator	COD Prints (Sends to Borrower)
Booked Date	
Dependency Status	Dependent
Loan Fee Percentage	1.068%
Academic Start Date	01/09/2015
Academic End Date	04/09/2015
Interest Rebate Percentage	0.000%
Less than Full-time Flag	
Loan Default / Grant Overpay	N
Student Eligibility Code	06 - High School Diploma

Incorrect!

COD Calculates Subsidized Usage Period

Award Information			
Grade Level	1		
Award Amount	\$2000		
Loan Period Start Date	01/01/2015		
Loan Period End Date	09/01/2015		
Academic Year Start Date	01/01/2015		
Academic Year End Date	09/01/2015		
Disbursement Information			
Disbursement 1 01/02/2015	DRI = true	\$1000	Enrollment = full-time
Disbursement 2 07/01/2015	DRI = false	\$0	Enrollment = full-time
Loan Period Length	244 days		
Academic Year Length	244 days		
Actual Subsidized Usage	1.0 years		
Maximum Subsidized Eligibility Period	6.0 years		
Remaining Actual Subsidized Usage	5.0 years		

Incorrect!

COD Calculates Subsidized Usage Period

Award Information			
Grade Level	1		
Award Amount	\$2000		
Loan Period Start Date	01/01/2015		
Loan Period End Date	05/01/2015		
Academic Year Start Date	01/01/2015		
Academic Year End Date	09/01/2015		
Disbursement Information			
Disbursement 1 01/02/2015	DRI = true	\$1000	Enrollment = full-time
Disbursement 2 07/01/2015	DRI = false	\$0	Enrollment = full-time
Loan Period Length	120 days		
Academic Year Length	244 days		
Actual Subsidized Usage	0.5 years		
Maximum Subsidized Eligibility Period	6.0 years		
Remaining Actual Subsidized Usage	5.0 years		

Incorrect!

Suggestions to help you help your schools...

A way to query their database...

- A report that lists loans with a lapsed loan period and remaining pended disbursement(s)
 - ✓ *Identifies loans where the pended disbursements need reducing to \$0 AND the loan period needs to be adjusted to include ONLY terms that have an actual disbursement*
- A report that lists loans with a loan amount NOT equal to the amount disbursed
 - ✓ *Identifies loans that need to have the loan amount adjusted*

Suggestions...

Allow changes to data...

- Loan period start/end dates
- Academic Year start/end dates
 - ✓ Perhaps an internal that does not allow an Academic Year less than 26 weeks
- Disbursements
 - ✓ *Amounts and dates*
 - ✓ *Including the Payment Period Start Date*
- Loan amounts

Suggestions...

Publications...

- Updated COD Technical Reference
 - ✓August 19, 2015
- Electronic Announcement #16
 - ✓November 21, 2014
- DCL ANN: 13-20
 - ✓December 9, 2013
- DCL GEN:13-13
 - ✓May 10, 2013
- DCL ANN: 13-04 & 113-05
 - ✓May 22, 2013

EDExpress & Direct Loan Tools Software

2015-2016 EDExpress Release 3.0

Financial Aid Shopping Sheet: Page 1 Change

Other options	
Family Contribution (As calculated by the institution using information reported on the FAFSA or to your institution.)	\$10,451 / yr
Payment plan offered by the institution	Military and/or National Service benefits
Parent or Graduate PLUS Loans	Non-Federal private education loan
American Opportunity Tax Credit *	
*Parents or students may qualify to receive up to \$2,500 by claiming the American Opportunity Tax Credit on their tax return during the following calendar year.	

2015-2016 EDExpress Release 3.0

Financial Aid Shopping Sheet: Page 2 Changes

Glossary

Cost of Attendance (COA): The total amount (not including grants and scholarships) that it will cost you to go to school during the 2015-16 school year. COA includes tuition and fees; housing and meals; and allowances for books, supplies, transportation, loan fees, and dependent care. It also includes miscellaneous and personal expenses, such as an allowance for the rental or purchase of a personal computer; costs related to a disability; and reasonable costs for eligible study-abroad programs. For students attending less than half-time, the COA includes tuition and fees; an allowance for books, supplies, and transportation; and dependent care expenses.

Total Grants and Scholarships: Student aid funds that do not have to be repaid. Grants are often need-based, while scholarships are usually merit-based. Occasionally you might have to pay back part or all of a grant if, for example, you withdraw from school before finishing a semester.

Net Costs: An estimate of the actual costs that you or your family will need to pay during the 2015-16 school year to cover education expenses at a particular school. Net costs are determined by taking the institution's cost of attendance and subtracting your grants and scholarships.

2016-2017 EDExpress Release 1.0

- Verification Tracking Flag
 - V3 value description updated to “FSA Use Only”
- Verification Selection Flag
 - Adding value of “C” for Change in Verification Tracking Group
 - ISIR-Import, View-FAA Information, Print-ISIR, Query, Query Value Help, Browse-Query Value Help, and File Formats

2016-2017 EDEExpress Release 1.0

- Transaction Data Source/Type code
 - Adding value 5Y for Identity Verification
 - ISIR-Import, View-FAA Information, Print-ISIR, and File Formats
- ISIR import will be updated to automatically populate the Demo tab SEC field with a value of “7” when the ISIR field High School or Equivalent field value is “2”

2016-2017 EDExpress Release 2.0

- Credit Override Response file (CRCO) discontinued in 2015-2016
 - Removing CRCO response file
 - Removing Credit Override field
- Credit Requirements Met (CRM) is the trigger for actual disbursements
 - Using CRM aligns EDExpress with the 2015-2016 COD changes to use CRM
 - CRM changed to updateable field including External Add & Change files as well as added to Multiple Entry

2016-2017 EDExpress Release 2.0

- CRM continued:
 - Additional functions updated
 - Reports will be updated to now show CRM instead of Credit Decision
 - List Loans, List Status, and Disclosure Statements
 - Predefined Queries will be updated to use CRM instead of Credit Decision
 - Loan MPN Credit Disb Status and Disb Number and LAA Not Equal to Endorser Amount
 - Credit Decision is now a read-only field and will be removed from External Add and Change files
 - Credit Decision “F” has been removed throughout software
 - Online credit checks

2016-2017 EDExpress Release 2.0

- Update the title of the Direct Loan 30-day Warning Report to DL Booking Warning Report
 - File Management, Security Setup, and Import

2016-2017 EDExpress Release 2.0 and DL Tools Release 16.0

- PLUS Counseling Expiration Date field
 - Release 2.0:
 - Removing from Origination Entry, Print-Direct Loan Origination Report, Query, Browse
 - DL Tools:
 - Removing from Rebuild Import and Import Compare
- Update Direct Loan and TEACH to allow actual disbursements to contain financial and non-financial changes within the same sequence number.
 - Release 2.0:
 - Remove Disbursement Type from COD Imports, COD Exports, Manual Entry, Multiple Entry, External Change, Edits Reports, Query, Browse, File Formats
 - DL Tools:
 - Removing from Rebuild, Disbursement Measurement Tool Report, SAS Loan Detail Comparison, SAS Disbursement Detail Comparison, and Internal Ending Cash Balance Report logic

Windows 8

- Windows 8 Pro 32-bit Compatibility Testing
 - 2015-2016 EDEExpress Release 3.0
 - DL Tools Release 15.0
 - EA will be posted with findings in Fall 2015
 - 2016-2017 Installation Guide and Desk Reference will be posted January 2016

Questions?

Technical Support: CPSSAIG@ed.gov

Business Team: Glenn Kirksey (glenn.kirksey@ed.gov);
Lisa Walker (lisa.walker@ed.gov)